

**HEALTHTECH – THERAPEUTIC**  
CLINICAL STAGE COMPANY

# BRING THE IMMUNE SYSTEM ONE STEP AHEAD OF CANCER

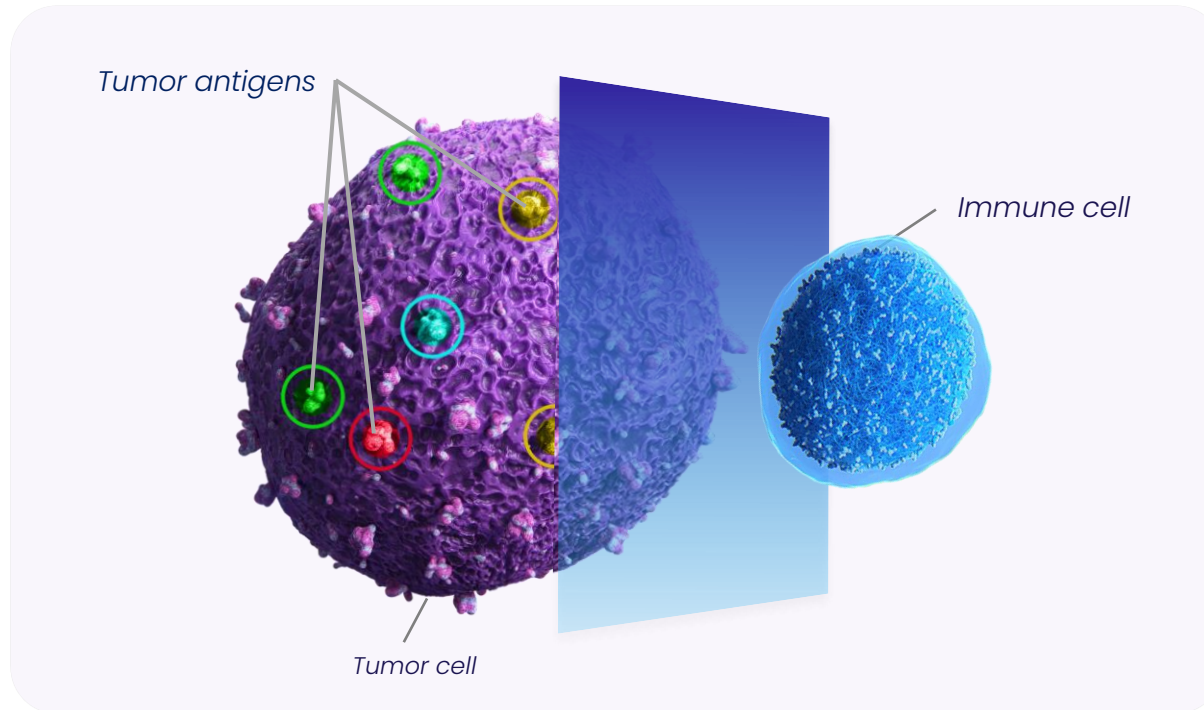
NEXT GEN. PRECISION MEDICINES  
**ANTICIPATING TUMOR EVOLUTION**

M. BRUN  
**COMMUNICATIONS MANAGER**  
[mbrun@brenus-pharma.com](mailto:mbrun@brenus-pharma.com)

07.01.25 BIOTUESDAYS



# Treatments fail to anticipate **tumors' evolution** and **relapse mechanisms** due to **tumor plasticity** : a key driver of cancer mortality



**Multiple & evolving targets**

**Hiding from the immune system**

**SOLID TUMORS**

**90%**  
of patients will relapse

**10M**  
Annual mortality Worldwide

## A unique value proposition for solid tumors

Anticipating tumor's evolution to overpass current limitations

PEPTIDIC VACCINES  
SHARED NEOANTIGENS

5 to 209

Gene extrapolation = biases

Medium to low patients eligibility

Off the shelf

Intermediate

mRNA  
VACCINES

Max 30

Invasive, patient-per-patient

Complex, long, expensive

CAR-T  
CELLS

Max 3



Therapeutic platform  
generating first-in-class  
candidates

### REPRESENTATIVE

- Largest repertoire: **250+ antigens**

- Proteomics target validation

### OFF-THE-SHELF

- High eligibility

- Mimicking resistances *in vitro*

### STANDARDIZED

- GMP manufacturing

- Control of cost & supply

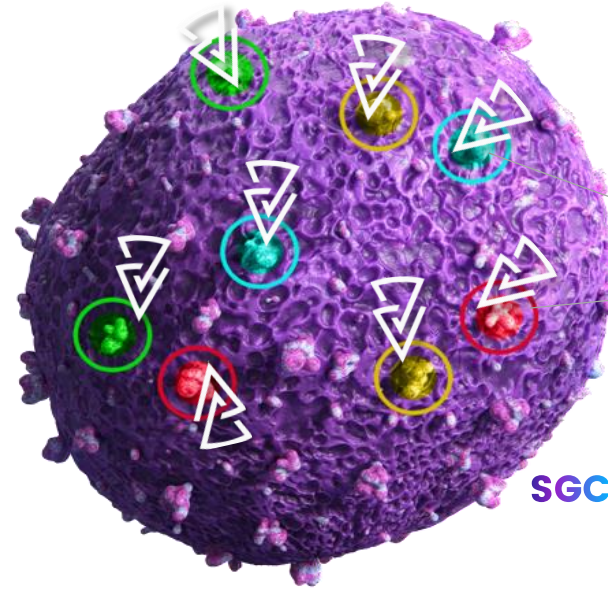
# Brenus “Stimulated Ghost Cell” innovation :

## The successful equation to **anticipate disease progression**

### ANTICIPATING **HETEROGENEITY** OF THE TARGETED INDICATION

Strict & AI-powered selection of starting material :  
**Allogeneic tumor cell lines**

- Representative oncogenic drivers
- Cold & Hot tumors
- Resistance capacities



### MIMICKING **PATIENT’S TUMORS** **RELAPSING CONDITIONS**

In vitro exposition to standards of care treatments :  
**+200 targets expressed**, including cancer related  
antigens (CRA), linked to therapeutic pressure and  
resistance

Multi-omics characterization of targets  
matching **>5000 patients’ biopsies**

### SAFELY ENSURING IMMUNE SYSTEM **ACTIVATION & EDUCATION**

Haptenation and inactivation process  
to initiate a potent immune response against tumor cells

**Stimulated Ghost Cells (SGC) presenting haptenated cancer-related antigens**

**MULTIPLE & REPRESENTATIVE  
TARGETS**

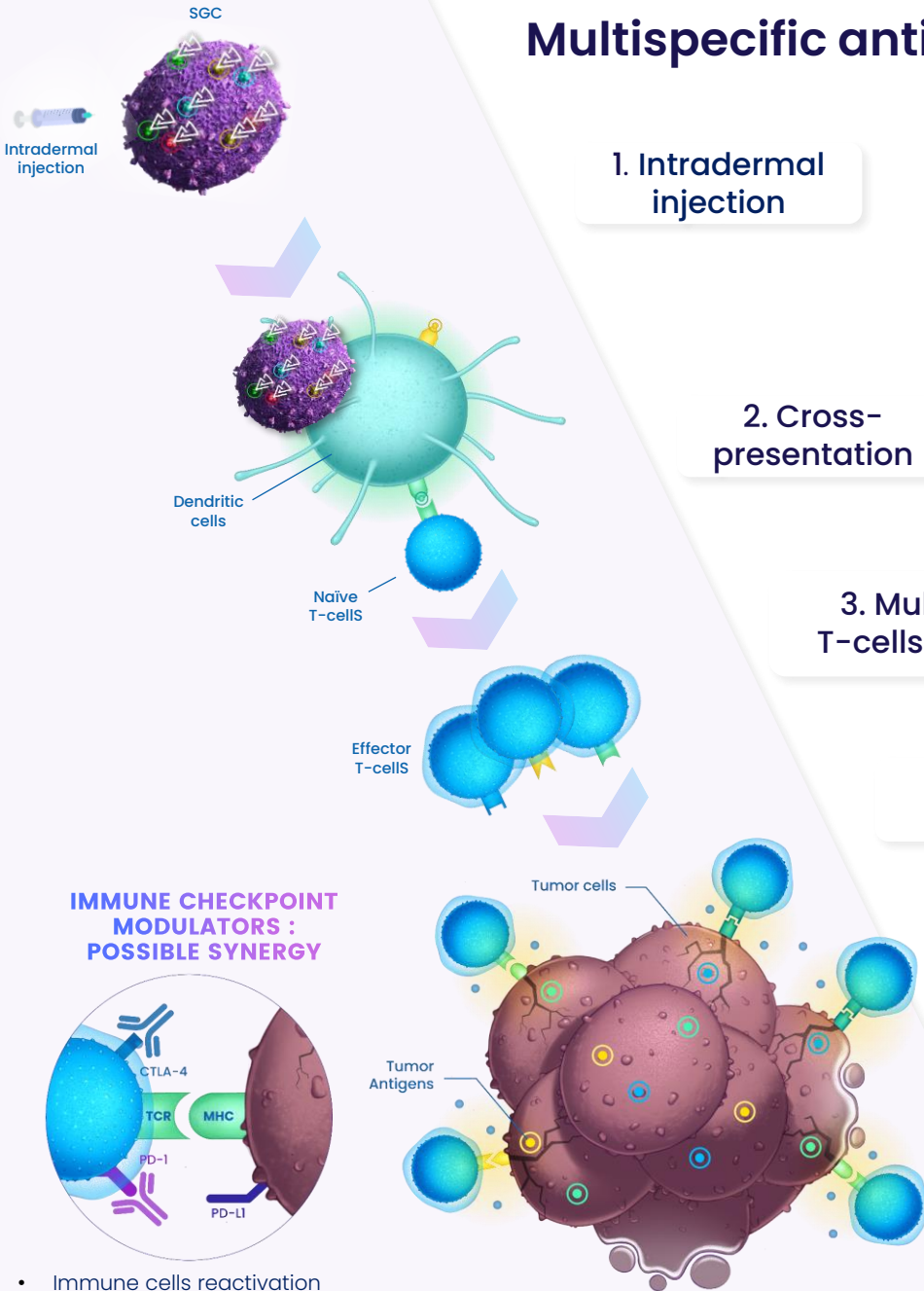
+

**OPTIMAL VISIBILITY**

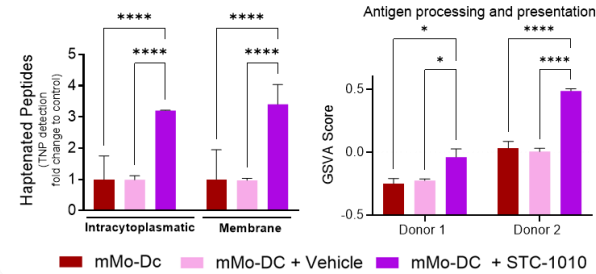
=

**EFFICIENT & SAFE EDUCATION  
OF THE IMMUNE SYSTEM**

# Multispecific antitumor response demonstrated consistently



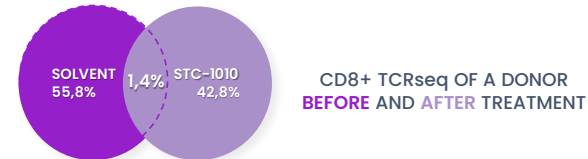
## DC PRIMING VIA HAPTENATED PROTEINS WAS CONFIRMED



## CONSISTENTLY VALIDATED ON VARIOUS MODELS

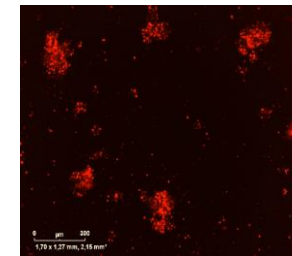
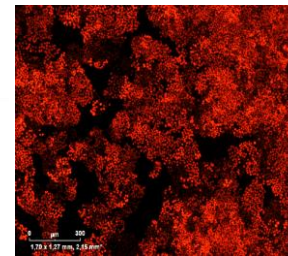
*in vivo*: CT26, MC38 ANTI-PD1 RESISTANT, MC38 WILD-TYPE  
*in ovo*: CHORIOALLANTOIC MODEL  
*ex vivo*: POTENCY IMMUNO ASSAY TO INDUCE TUMOR KILLING

## INDUCTION OF INNATE & ADAPTATIVE SPECIFIC IMMUNE RESPONSE



## ROBUST BATCH TO BATCH ANTITUMOR EFFECT

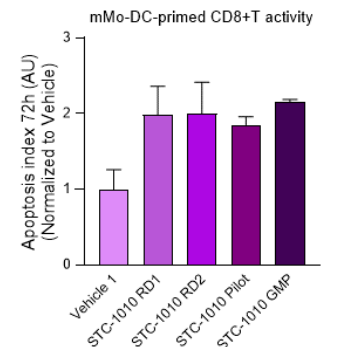
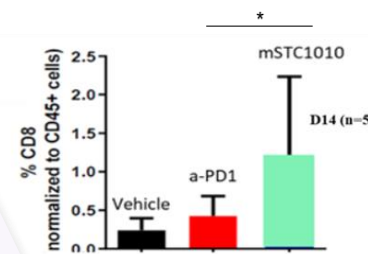
## TUMOR KILLING : 90% OF TUMOR CELLS (CRC) UNDER APOPTOSIS AFTER 72h



HUMAN CRC TUMOR CELLS + NON-SPECIFIC LT<sub>CD8+</sub>

HUMAN CRC TUMOR CELLS + STC-1010 ACTIVATED LT<sub>CD8+</sub>

## SIGNIFICANT T-CELLS INFILTRATION INTO TUMORS



- Immune cells reactivation
- Strengthen memory process

# Highly skilled & dedicated team

Led by expert co-founders

**BIOORP**  
Acquired by NovoNordisk  
\$170M

**Jacques GARDETTE**  
Co-founder/President

Serial entrepreneur  
in healthcare & digital health



**Benoit PINTEUR** *PharmD*  
Co-founder/CSO

SGC Technology's inventor  
Pharmaceutical R&D expert



**Roche**  
**Schering-Plouc**  
**Bio Elpidia** Acquired by Polyplus

**Roche**  
**Takeda**  
**SERVIER**

**Paul BRAVETTI**  
*PharmD* **CEO**

Medical & Marketing expert  
WW Immuno-oncology launches



**Aymeric BORDET**  
**CFO SKEMA, CCA**

Health & Tech industries  
From seeds to \$100M SERIES B



**TRANSCURE**  
**DEEPLINK**

**14 collaborators**  
with extensive experience  
in major companies  
& institutions

Covering R&D, CMC,  
**Medical affairs, Partnering**  
& **Communication**

**3 PhDs, 5 PharmDs**  
Gender balance  
♀ 57% – ♂ 43%

**Brenus' scientific comittee cumulating +1500 international peer-reviewed articles**



**CGFL**

**Pr F.GHIRINGHELLI MD, PhD**  
*Board Chairman*  
Pr of Oncology (FR)



University of  
Pittsburgh

**Pr O.J FINN PhD**  
Pr of Immunology (US)



Cima  
Universidad  
de Navarra

**Pr I.MELERO MD, PhD**  
Pr of Immunology (ES)



**JOHNS HOPKINS**  
UNIVERSITY

**Pr M.YARCHOAN MD, PhD**  
Pr of Oncology (US)



**GUSTAVE ROUSSY**  
CANCER CAMPUS  
GRANDY PARIS  
**Bergonié**  
UNICANCER  
NOUVELLE-AQUITAINE

**Pr A.ITALIANO MD, PhD**  
Pr of Oncology (FR)



**Princess maxima center**  
pediatric oncology  
**UMC Utrecht**

**Pr A.EGGERMONT MD, PhD**  
Pr of Oncology (NE)



## A DISRUPTIVE TECHNOLOGY

Anticipating tumor escape



## THE MISSING LINK

A technological relay to solve unmet needs

## A LIMITLESS POTENTIAL

Generating patented first-in-class therapies in solid tumor



We are **pioneers** in next-generation **immuno oncology treatment**



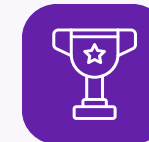
Proteomics-driven precision & prediction approach



Allogeneic and standardized GMP-ready platform  
9 oncology centers engaged for Phase I



1 treatment = broad targeted patient population  
609K eligible patients in 2029



Awarded Biotech of the year 2024 in France  
\$30M invested since 2020



14 professionals  
3 PhDs, 5 PharmDs  
♀ 57% 43% ♂

# Leveraging our off-the-shelf platform to generate strong candidates in solid tumors



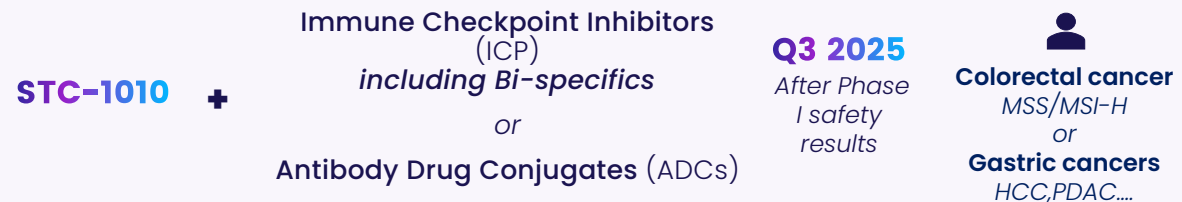
## STC-1010 COLORECTAL CANCER

- 2<sup>nd</sup> cause of cancer mortality worldwide
- 608k patients in 2029

BREaK CRC / Phase I SAFETY n=18

BREaK CRC / Phase IIA EFFICACY n=80

## COLLABORATIVE COMBO STUDY



## PLATFORM ACCELERATION

Companion test

AI & ML Implementation

New products/ New therapeutic area developments  
(Ovarian K, NSCLC, Breast K,...)

## PATENT PORTFOLIO

Strong protection worldwide

Platform & Product protected **22 patents** granted  
in key countries (USA, EU, JPN, AUS, ...)





*Dare to innovate*